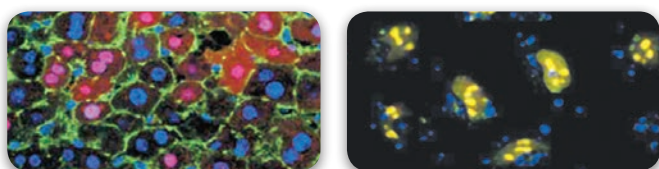


TransIT[®]-2020 Transfection Reagent

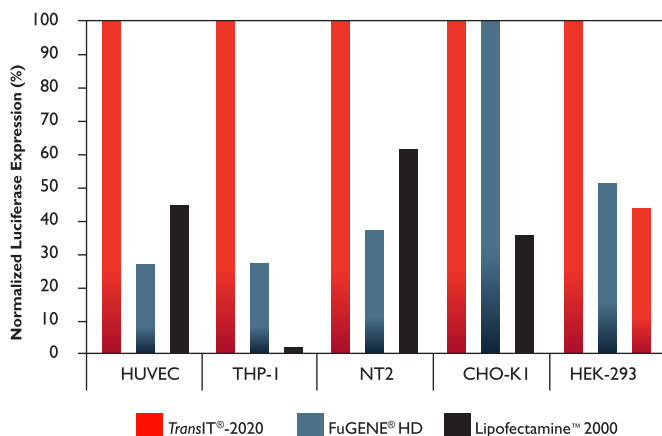
A high performance, animal-free, broad spectrum DNA transfection reagent

- Broad spectrum DNA delivery in many cell types, including hard to transfect cell lines and primary cells
- Balances high efficiency nucleic acid delivery and low cellular toxicity, imperative to achieving reliable experimental results
- Outperforms competitor reagents
- Superior transfection of Insect Cells
- Animal origin free

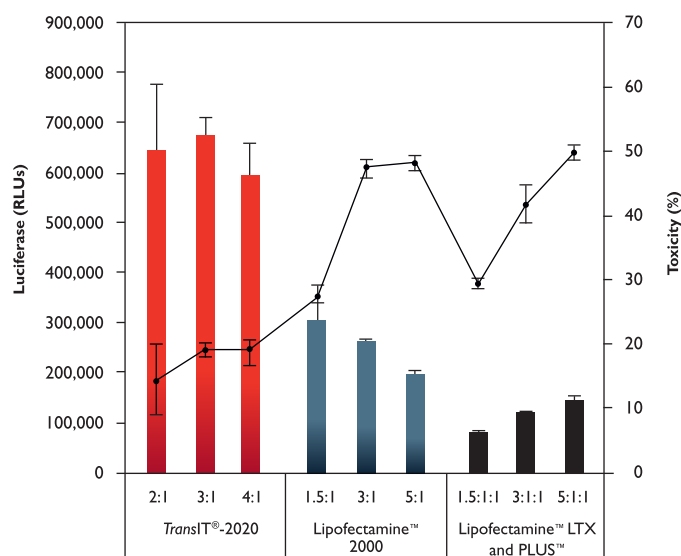


TransIT[®]-2020 Reagent Exhibits Higher Expression and Lower Cellular Toxicity Compared to Other Transfection Reagents

Superior Gene Expression in a Broad Spectrum of Cell Types



The indicated cell types were transfected in 96-well plates with a luciferase expression plasmid (0.1 µg/well) according to industry accepted testing protocols. Reagent to DNA ratios were optimized for each cell type: *TransIT*[®]-2020 (Mirus Bio, 2:1 or 3:1), *FuGENE*[®] HD (Roche, 3.5:1), *Lipofectamine*[™] 2000 (Life Technologies, 1.5:1, 3:1 or 5:1). Luciferase activity was measured 24 hours post-transfection. Values were normalized to *TransIT*[®]-2020 and presented as a percentage of luciferase expression. *FuGENE*[®] is a registered trademark of Fugent LLC. *Lipofectamine*[™] is a trademark of Life Technologies Corporation.



Human umbilical vein endothelial cells (HUVEC) were transfected with a luciferase expression plasmid using the designated reagents at the reagent-to-DNA ratios indicated beneath each bar. Transfections were performed in 96-well plates using 0.1 µg of plasmid DNA per well. Luciferase expression (bar graph) and lactate dehydrogenase (LDH) levels (line graph) were measured at 24 hours post-transfection. LDH levels are reported as % cytotoxicity compared to cells alone and were measured using a commercially available colorimetric assay; all values at or below zero are represented as zero on graph. Error bars represent the standard deviation of triplicate wells

Please contact technical support for additional information on any of these products